

THE DESK CENTRE

QUALITY ENGLISH REPRODUCTION FURNITURE FOR THE HOME & OFFICE



A FAMILY RUN BUSINESS SINCE 1965

INTRODUCTION

The Worley family's involvement in selling traditional furniture, dates back to the late 1950's when Albert Edward Worley opened an antique shop and auction house in Purbrook, Hampshire. His son Adrian worked with his father, learning the trade and after a few years of working together, they formed the company A.E. Worley and Son Ltd.

Albert retired in the mid 1970's, selling the shop in Purbrook, but Adrian continued the family business and started selling English Reproduction furniture to various trade customers across the South and West of England.

In 1976 a different shop became available. No. 76 Northam Road, Southampton, from a retiring trade customer of Adrian's. He decided to buy the shop and a few years later No. 74 was acquired, adding more showroom space and workshop facilities. Adrian was helped through these early years in the shop by his wife Marian and later his two sons James and Graham.

In 1984 a family decision was made to rename the now flourishing business, The Desk Centre and start specializing in new Reproduction Pedestal Desks, Bookcases, Filing Cabinets and Leather Chairs plus Antique and Refurbished Desks.

After retiring in 2002, Adrian and Marion passed over the business to their two sons, James and Graham, who by now, had learnt their trade as furniture makers, restorers, French polishers and upholsterers. Skills, which have since been passed on to their current staff.

With continual expansion of the business, The Desk Centre are now leaders in supplying traditional English office furniture to the home and work place. Still manufacturing and upholstering in the UK, keeping delivery times low.

The Desk Centre has supplied thousands of satisfied customers from the UK and all over the world and they still pride themselves on giving a quality personal service, with over 45 years experience gained in the furniture trade.



*This brochure is dedicated to
Adrian Worley 1938-2005.
Founder of The Desk Centre*



LOCATION

Located in Southampton's Antique Quarter, with a good car park in front of the shop. Only a mile from the Central Train Station and a short taxi drive from Eastleigh Airport. We now occupy three Victorian buildings with over seven showrooms to view. Over 250 pieces of furniture on display for immediate delivery, and a large selection of Prints, Mirrors and Desk Accessories.

OPENING HOURS

Monday - Friday 8.30am - 4.45pm
Saturday 10.00am - 4.30pm Closed Bank Holidays

HOW TO FIND US



DELIVERY

We operate two of our own delivery vans and can deliver and install the furniture we sell, direct to your Home or Office.

Weekly trips in and around the London area and regular trips covering the rest of the UK. Monday to Friday.

Please see our website for up to date delivery charges.



PALLET DELIVERY

In some instances it may speed up the delivery time if we wrap the item and secure to a wooden pallet for a local courier company to then deliver to your address. Note: The customer is then responsible for unwrapping and carrying the goods into the property.

EXPORT

We regularly ship to Europe and the USA via our local port of Southampton. Please contact us for a delivery quote.

PAYMENT TERMS

To place an order we require a 10% deposit, the balance being payable on delivery, cash, cheque, payment card or bank transfer.

BROCHURE CONTENTS

Burr Elm Room Setting	Front cover
Worley Family Intro & Map	Page 2
Delivery Information, Payment Terms, Contents	Page 3
Wood Finishes.....	Page 4
Leather Colours/Gilding Patterns.....	Page 5
Dark Mahogany Room Setting/Antique Mahogany Room Setting	Page 6
Yewood Room Setting/Cherry Wood Room Setting	Page 7
Light Oak Room Setting/Medium Oak Room Setting.....	Page 8
Burr Oak Room Setting/Burr Elm Room Setting	Page 9
Traditional Range Pedestal Desks	Page 10
Traditional Range Filing Cabinets	Page 11
Premier Range Pedestal Desks	Page 12
Desk Returns.....	Page 13
Premier Range Partners Desks	Page 14
Premier Range Filing Cabinets	Page 15
Premier Range Computer Cabinets & Work Stations	Page 16
Traditional Range Pedestal Computer Desks.....	Page 17
Premier Range Computer Desk	Page 18
Premier Range Twin Pedestal Computer Desk	Page 19
Writing Bureaux.....	Page 20
Leather Study/Office Chairs	Page 21
Small Bookcases/Low Open Bookcases	Page 24
Low Cupboard Bookcases/Tall Open Bookcases	Page 25
Deep Base Cupboards	Page 26
Boardroom/Dining Tables & Chairs	Page 27
Sideboards & Glazed Bookcases	Page 28
Occasional Furniture	Page 29
Desk Lamps	Page 30
Desk Accessories	Page 31
Back Page	Page 32

WOOD FINISHES

- We carry out all our own polishing using traditional methods with the latest durable polishes
- Large range of popular wood shades, shown below
- Colour Matching - We are able to polish any of our furniture to match a given colour sample, for which there is no extra charge.



Light Antique Mahogany



Antique Mahogany



Red Mahogany



Dark Mahogany



Natural Oak



Light Oak



Medium Oak



Dark Oak



Standard Yewwood



Old Yewwood



Light Cherry



Antique Cherry



Burr Oak



Burr Elm

The wood shades shown cannot be used as an exact colour match due to the limitation of the photographic process.

Wood grain patterns will vary.



LEATHER COLOURS

We use two types of leather for our desk tops:

- Skiver Leather (sheep skin), ideal for small to medium sized tops, Bureau flaps etc.
- Cow Hide, for larger desk tops.

All are then finished with a choice of gilt or Blind embossed tooling patterns.

Eight different colours to choose from.



Olive Green

Tan

Red

Blue



Bottle Green

Brown

Wine

Black

GILDING PATTERNS



Rose Gilt

Acorn Gilt

Snake Gilt

Thin Line Gilt

Rose Blind

Acorn Blind

Snake Blind

Thin Line Blind



DARK MAHOGANY ROOM SETTING



DISPLAYED
FURNITURE

DC082b

Open Bookcase
36" (91cm) x 78" (198cm)

DC039

Fax Printer Table
24" (61cm) x 18" (46cm)

DC049

*Belmond Swivel
Chair*

DC001c

Traditional Range Pedestal Computer Desk
48" (122cm) x 24" (61cm)

ANTIQUE MAHOGANY ROOM SETTING



DISPLAYED
FURNITURE

*Mahogany
Coat
Stand*

DC083b

Corner Bookcase
36" (91cm) x 84" (213cm)

DC087c

Corner Bookcase
72" (183cm) x 84" (213cm)

DC048

*Regency Single
Desk Chair*

DC011

Premier Range Pedestal Desk
Rear View - 48" (122cm) x 24" (61cm)

YEWOOD ROOM SETTING



DISPLAYED
FURNITURE

DC054

*Captains Swivel
Desk Chair*

DC078c

*Low Open Bookcase
36" (91cm) x 36" (91cm)*

DC048

*Regency Single
Desk Chair*

DC012

*Premier Range
Pedestal Desk*

54" (137cm) x 30" (76cm)

DC143

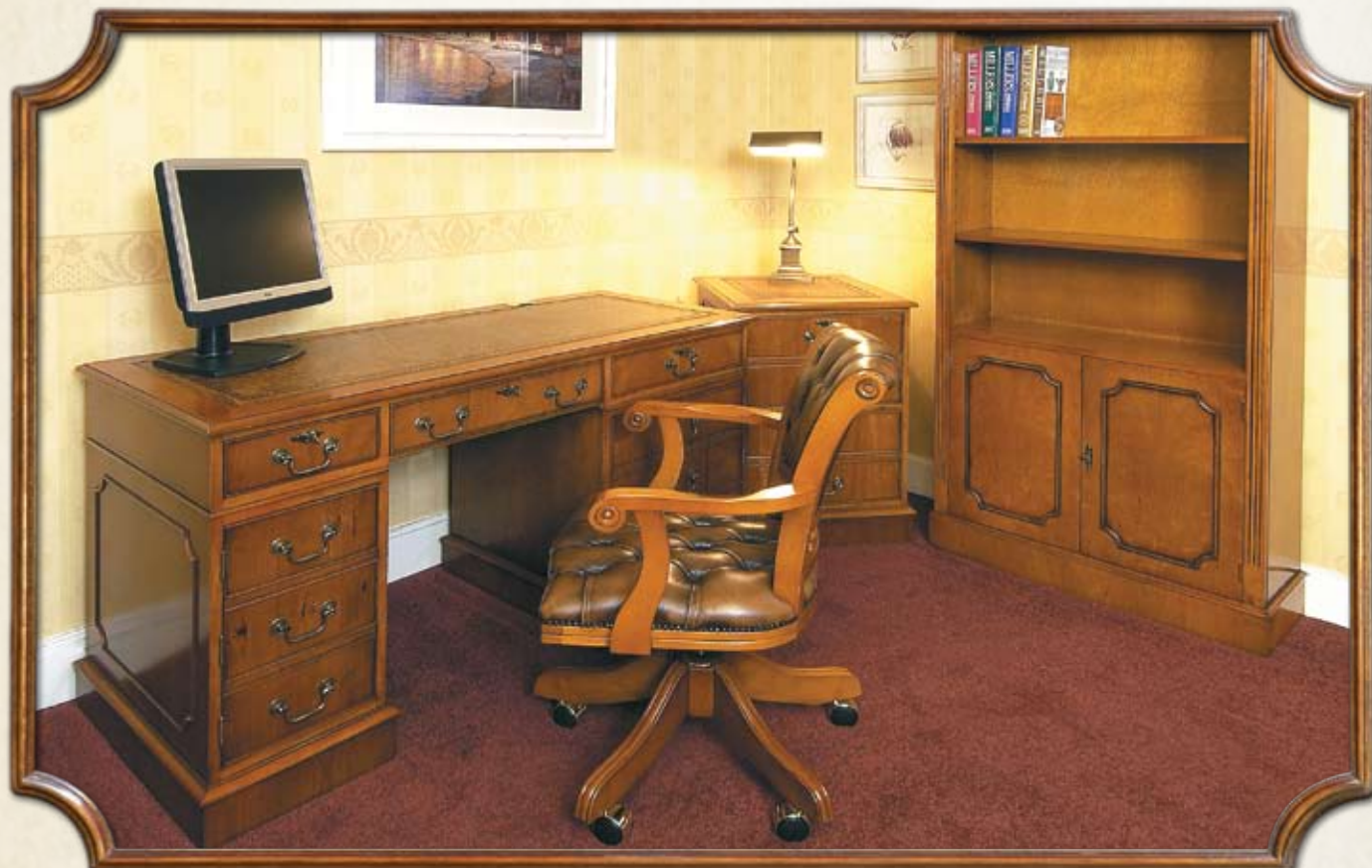
*Gothic Style
Glazed Bookcase*

58" (147cm) x 76" (193cm)

DC021

*Premier Range
Two Drawer
Filing Cabinet*

CHERRY WOOD ROOM SETTING



DISPLAYED
FURNITURE

DCC05

*Premier Range
Tower Computer Desk
4'8" (142cm) x 2' (61cm)*

DC055

*Viscount Carver
Desk Chair
Tan Hide Leather*

DC021

*Premier Range
Two Drawer
Filing Cabinet*

DC082b

*Five Shelf Open Bookcase
with Flush Cupboard
3' (91cm) x 6'6" (198cm)*

LIGHT OAK ROOM SETTING



DISPLAYED
FURNITURE

DC011
Premier Range Pedestal Desk
48" (122cm) x 24" (61cm)

DC055
*Viscount Single
Swivel Desk Chair*

DC021
*Premier Range Two
Drawer Filing Cabinet*

DC079a
Low, Wide Open Bookcase
48" (122cm) x 36" (91cm)

MEDIUM OAK ROOM SETTING



DISPLAYED
FURNITURE

DC060
Library Chair

DCC06
*Premier Range Twin
Pedestal Computer Desk*
5'6" (167cm) x 3' (91cm)

DC079a
Low, Wide Cupboard Bookcase
48" (122cm) x 36" (91cm)

DC054
*Captains Swivel
Desk Chair*

DC021
*Premier Range
Two Drawer
Filing Cabinet*

BURR OAK ROOM SETTING



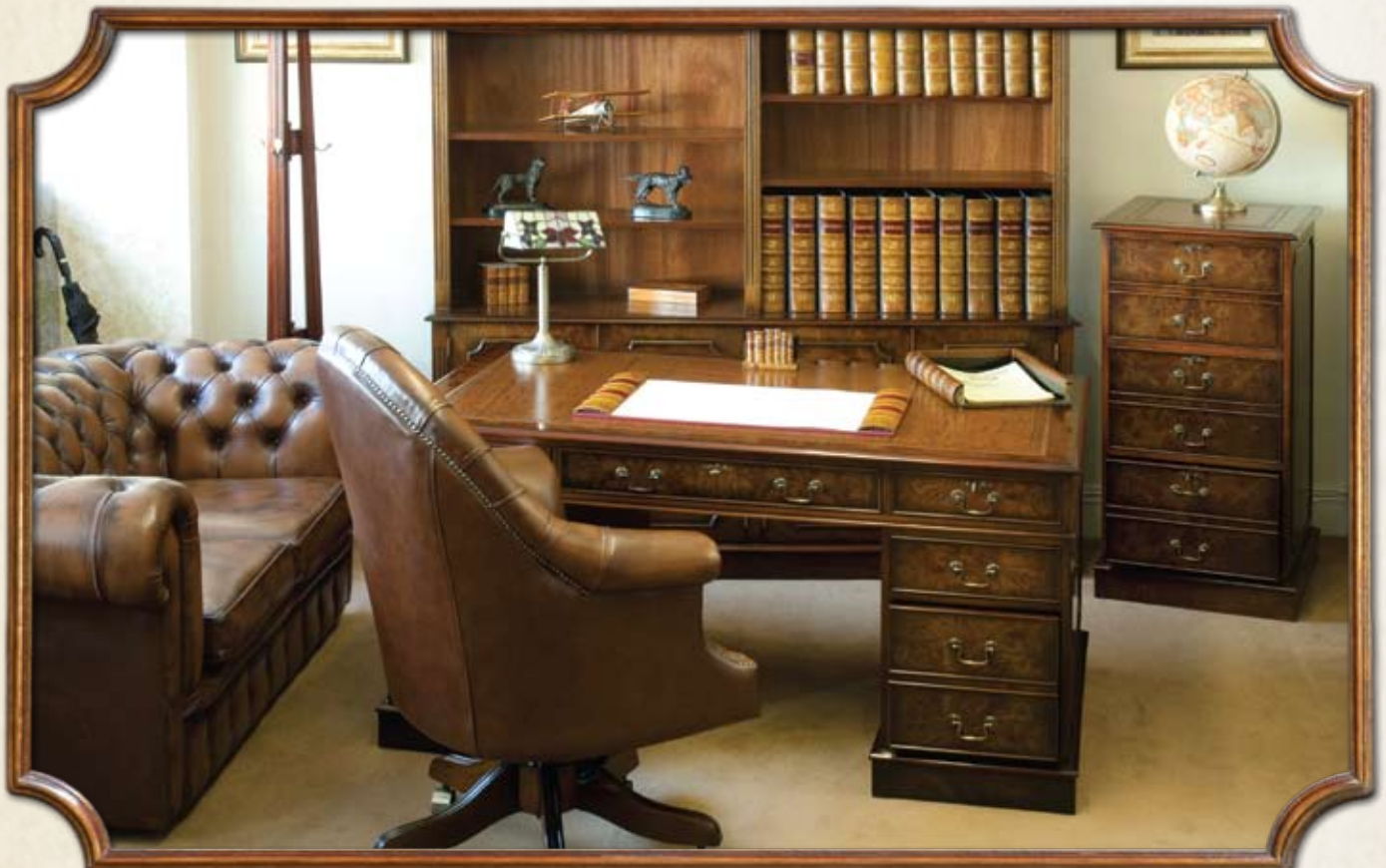
DISPLAYED
FURNITURE

DC014
Premier Range Pedestal Desk
6' (183cm) x 3' (91cm)

DC057
*Gainsborough Swivel
Desk Chair*

DC087c
Tall Flush Cupboard Bookcase
6' (183cm) x 7' (213cm)
(Optional Glazed Doors fitted)

BURR ELM ROOM SETTING



DISPLAYED
FURNITURE

DC065a
*Two Seat
Chesterfield Sofa*

DC061
*Directors Swivel
Desk Chair*

DC087c
*Tall Deep Base
Cupboard Open Bookcase*
6' (183cm) x 7' (213cm)

DC013
*Premier Range
Pedestal Desk*
5' (152cm) x 3' (91cm)

DC022
*Premier Range
3 Drawer Filing
Cabinet*

PEDESTAL DESKS

- Two different ranges available, **Traditional Range** and **Premier Range**
- Large range of desk sizes
- Up to six different wood finishes (Premier Range) to choose from
- Eight different leather colours
- Made to measure options (Premier Range)
- Most desks are made in three sections for easy assembly
- Drawers can be fitted with turned wooden knobs or Swan Neck style drop handles



DCCD 001

Traditional Range Corner Desk

32" (81cm) x 32" (81cm)
Dark Mahogany finish shown

TRADITIONAL RANGE

- Our good value range of desks and filing cabinets
- Available in four different wood finishes; Mahogany, Yewwood, Cherrywood and Oak
- Continuous plinth bases
- Desks have one locking top drawer and a double depth drawer (not on metal extension runners)
- Plain sides and back with no decorative mouldings



DCSP 001

Traditional Range Single Pedestal Desk

4' (122cm) x 2' (61cm)
Antique Mahogany finish shown



DC002

Traditional Range Desk

4'6" (137cm) x 2'6" (76cm)
Cherry finish shown



Rear View



Double depth drawer

TRADITIONAL RANGE CONTINUED

DC003

Traditional Range Desk with optional return

60" (152cm) x 36" (91cm)
Return Depth 36" (91cm) - 42" (107cm)
Antique Mahogany finish shown



TRADITIONAL RANGE FILING CABINETS



- Available in two, three and four drawer configurations
- Four drawer filing cabinets can be made vertical or horizontal
- Filing cabinets fitted with full extension metal runners
- Aluminium rails for suspension files with room for info tags
- Tops can be leathered or polished wood



DC005

Traditional Range Filing Cabinet

Two drawers, fitted with optional wooden knobs
Antique Mahogany finish shown



DC008

Traditional Range Filing Cabinet

Fitted with two single drawers, a filing drawer and a cupboard
Cherry finish shown

DRAWER CUPBOARD OPTIONS

*Both our Traditional Range and Premier Range
Filing Cabinets can be made with a choice of single
drawers, filing drawers or cupboard doors*

PREMIER RANGE DESKS

FOR
DESK
ACCESSORIES
SEE PAGE
31

- Our best quality range of desks and filing cabinets
- Available in six different wood finishes including our exclusive Burr Oak and Burr Elm finishes, in a large range of popular sizes plus the option of made to measure
- Pedestals can be fitted with a continuous plinth base or bracket feet
- Desks have 3 locking top drawers and a filing drawer on metal extension runners
- Drawers can be fitted with solid brass swan neck style handles or wooden knobs



DC013

Premier Range Desk

60" (152cm) x 36" (91cm)
Burr Elm finish shown

FITTED AS STANDARD



The sides and back of all Premier Range Desks and Filing Cabinets are fitted with decorative mouldings as shown



All Premier Range Desks have one Filing Drawer fitted on pull out extension runners



Bracket style feet can be fitted instead of plinth bases

OPTIONAL EXTRAS



Optional pull out brushing slides make useful extra working surfaces



Optional brass pedestal protective angle strips



Optional loose panel that fits between the desk pedestals



DC011
Premier Range Desk
48" (122cm) x 24" (61cm)
Yewwood finish shown

DC021
*Premier Range
Two Drawer Filing
Cabinet*
Yewwood finish shown



DC012
*Premier Range
Desk*
54" (137cm) x 30" (76cm)
Natural Oak finish shown

DESK RETURNS



DC014
Premier Range Desk
72" (183cm) x 36" (91cm)
Antique Mahogany finish shown

DC018
*Optional Desk
Return*

- Desk returns can be fitted on the right or left hand side of the desk.
- Choice of flush fitting (same height as desk top, or a lower level fitting with mock drawer above).
- Leather inlay on the return or a polished surface.
- A cupboard door can be fitted under the return instead of drawers.
- The support chest can be made with 3 single drawers or a cupboard door.
- Standard depth from the desk for the return is 36" (91cm). This can be made longer if required.



DC013
Premier Range Desk
60" (152cm) x 36" (91cm)
Burr Oak finish shown

DC017
*Optional Desk
Return
(Flush)*

PREMIER RANGE PARTNERS DESKS

- Partners Desks enable two people to work at the same desk
- Two options available.

Option A - Drawers on front of desk + drawers and cupboards at back

Option B - Drawers repeated on front and back of desk



Option A shown
(rear view)



DC020

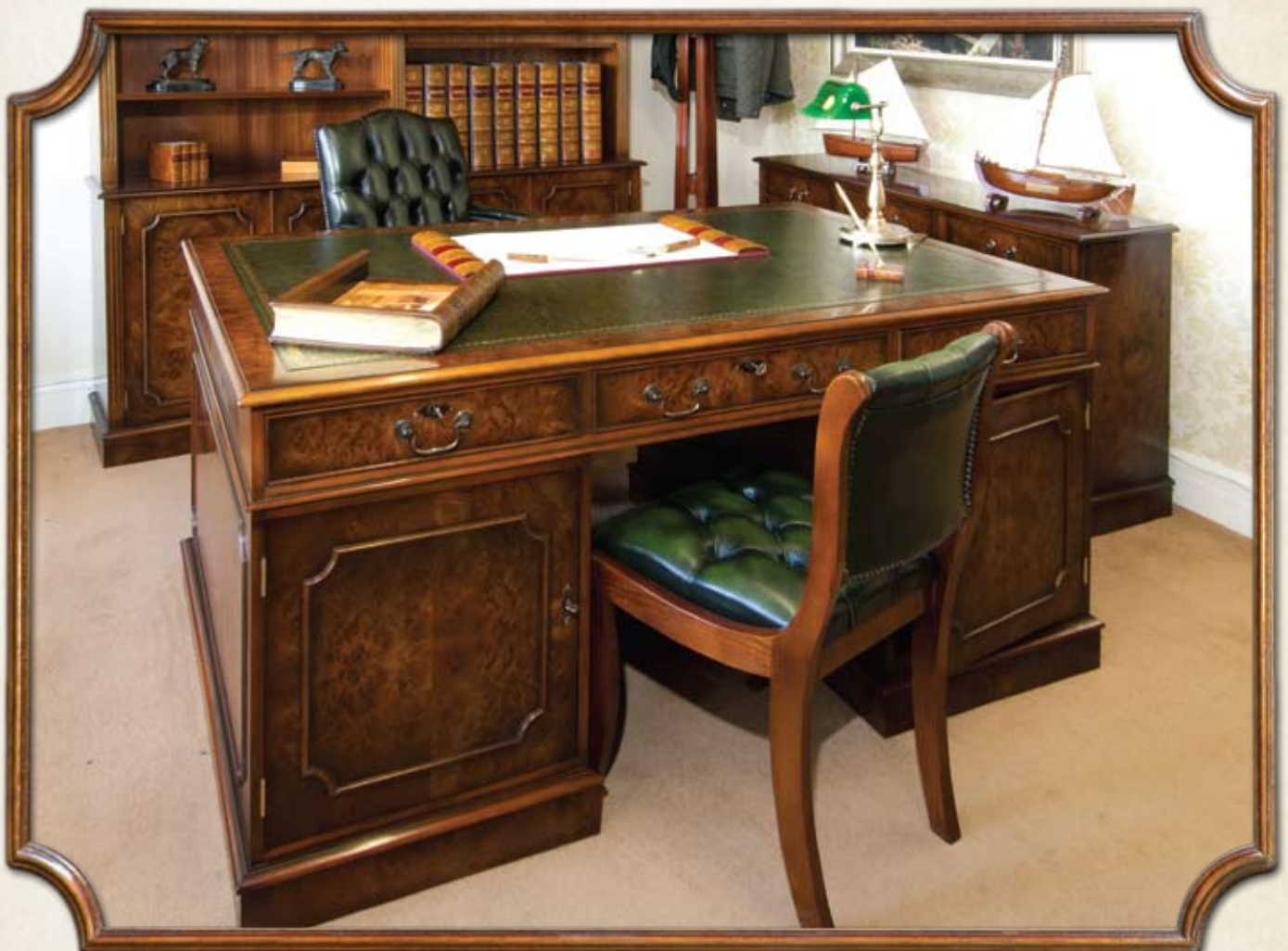
Premier Range Partners Desk

72" (183cm) x 48" (122cm)

Burr Oak finish, option A shown



Cupboards
have adjustable
shelves



DC020

Premier Range Partners Desk (Rear View)

72" (183cm) x 48" (122cm) Burr Elm finish shown

PREMIER RANGE FILING CABINETS

- Available in two, three, four and six drawer configurations
- Four and six drawer filing cabinets can be made vertically or horizontally
- Filing drawers fitted with full extension metal runners
- Aluminium rails for suspension files with room for info tags
- Tops can be leathered or polished wood



DC021
*Premier Range Two
Drawer Filing Cabinet*
Antique Cherry finish shown



DC022
*Premier Range
Three Drawer
Filing Cabinet*
Burr Elm finish shown



DC023
*Premier Range Four
Drawer (Vertical)
Filing Cabinet*
Antique Mahogany finish shown



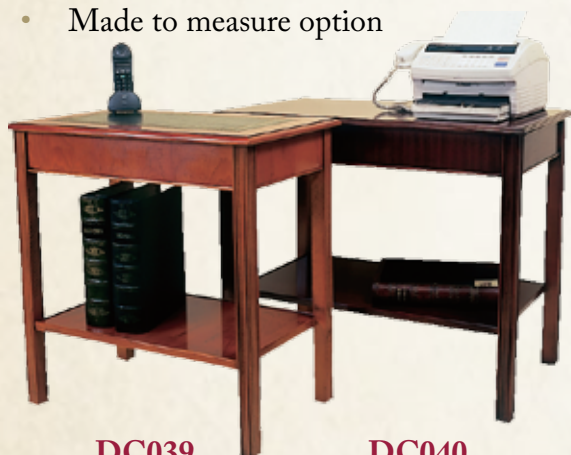
DC024
*Premier Range Four Drawer
(Horizontal) Filing Cabinet*
Burr Oak finish shown



DC026
Premier Range Six Drawer (Horizontal) Filing Cabinet
Antique Mahogany finish shown

FAX/PRINTER TABLES

- Useful freestanding tables
- Ideal for fax/prINTER machines
- Range of sizes and wood finishes
- Made to measure option

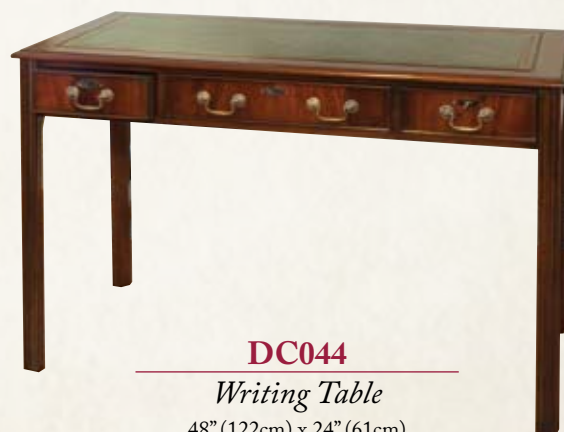


DC039
Fax/Printer Table
24" (61cm) x 18" (46cm)
Yewood finish shown

DC040
Fax/Printer Table
30" (76cm) x 18" (46cm)
Mahogany finish shown

WRITING TABLES

- Premier Range quality
- Square Chippendale style legs
- Three locking top drawers
- Made in a range of popular sizes, plus the option of made to measure



DC044
Writing Table
48" (122cm) x 24" (61cm)
Antique Mahogany finish shown

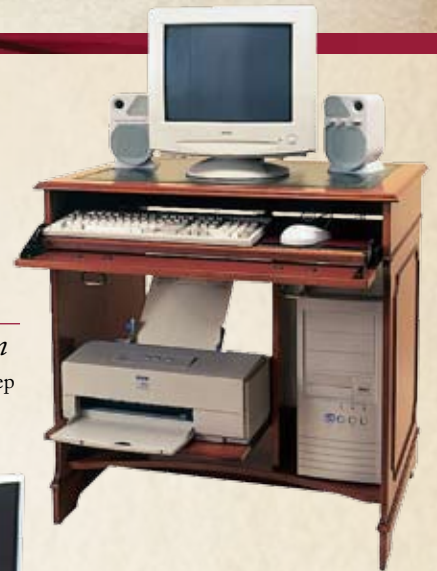
PREMIER RANGE COMPUTER CABINETS & WORK STATIONS

- Compact cabinets, useful where space is limited
- Drop down drawer fronts with pull out keyboard slides
- Pull out printer/scanner shelves can be positioned to suit different equipment
- Split folding doors on models DCC02 and DCC03
- Tops can be leathered or polished
- Full range of wood finishes available

DCC01

Computer Work Station

31" (79cm) wide x 23" (59cm) deep
x 31" (78cm) high
Yewwood finish shown



Open view



Closed view

DCC02

Computer Base Cabinet

3' (92cm) wide x 31½" (80cm) high x 22½" (57cm) deep Mahogany finish shown



Closed view



Two CD drawers



Open view

DCC03

Computer Cabinet

3' (92cm) wide x 4'9" (150cm) high x 22½" (57cm) deep Cherry finish shown (Doors split and fold around cabinet)

PEDESTAL COMPUTER DESKS

- Hide away unsightly computer equipment, freeing up valuable desk top space with our range of Pedestal Computer Desks
- Drop down drawer fronts with pull out keyboard slides
- Mouse trays that slide from left to right
- Pull out printer/scanner shelves can be positioned to suit different equipment
- Solid brass desk top tidies allow cable access to monitor, telephone etc.
- Holes inside desks allow cables to run side to side and rear or side plinth mouse holes for feeding out the power supply
- Different cupboard/drawer configurations available
- Rear cupboard doors to help connect wiring



Optional leather wrist pad



Keyboard shelf with sliding mouse tray



Brass desk tidy



Cable feed mouse hole

TRADITIONAL RANGE PEDESTAL COMPUTER DESK

- The same design as our Traditional Range Pedestal Desks, but with a cupboard door to house the tower unit, a keyboard centre drawer conversion and a filing drawer on metal extension runners
- Available in four wood finishes: Mahogany, Yewood, Oak and Cherry



Optional rear cupboard door to help with connecting wires



Open view



Closed view

DC002c

Traditional Range Pedestal Computer Desk

4'6" (137cm) x 2'6" (76cm) Antique Mahogany finish shown Optional kneehole slide fitted for a printer

PREMIER RANGE COMPUTER DESKS

DCC04



DCC04 Option A

Single Pedestal Computer Desk

4' (122cm) x 2' (61cm) Cherrywood finish shown Optional Kneehole Slide fitted

DCC05

- Designed with one larger width pedestal
- Five sizes available plus the option of made to measure
- Four different cupboard/drawer options



DCC05 Option B

Tower Computer Pedestal Desk

4'8" (142cm) x 2' (61cm) Antique Mahogany finish shown



DCC05 Option D

Apple Mac/Laptop Computer Pedestal Desk

4'8" (142cm) x 2' (61cm) Burr Oak finish shown

TWIN PEDESTAL COMPUTER DESK

- DCC06**
- Five sizes available plus the option of made to measure
 - Five cupboard/drawer options



DCC06 Option E

Pedestal Computer Desk

72" (183cm) x 36" (91cm) Burr Oak finish shown
Optional Keyboard Drawer fitted



Closed view



Open view

DCC06 Option D

Pedestal Computer Desk

5'6" (167cm) x 2'6" (76cm) Medium Oak finish shown



Pull out printer slide



*Rear cupboard doors to help with connecting wiring
and help with ventilation*

WRITING BUREAUX

All our Writing Bureaux are available in three different styles

- A)** Single top drawer with a cupboard below (adjustable shelf inside)
- B)** Three drawers with 9" high Queen Anne style legs
- C)** Four drawers (21" and 30" width) or five drawers (on the 36" and 39" width)

Options available on Writing Bureaux

- Either a shaped plinth or a fully enclosed plinth on Option a or Option c
- The Bureau flaps and drawer fronts can be inlaid or left plain
- Bureau interior flaps can be inlaid with leather or left as a polished wood surface
- Inlaid marquetry on the outside flap (optional)
- Made to measure available on request



DC065 Style C

Four Drawer Bureau

21" (53cm) Inlaid flap
Mahogany finish shown



DC069 Style C

Four Drawer Bureau

30" (76cm)
Inlaid flap with optional Marquetry inlay
Natural Oak finish shown



*Interiors have leather inlaid flaps.
Eight leather colour options*



DC069 Style B

Five Drawer Queen Anne Style Bureau

39" (99cm)
Inlaid flap and drawer fronts with Marquetry inlay
Antique Mahogany finish shown



DC067 Style A

*Single Top Drawer with
Cupboard below Bureau*

30" (76cm) Medium Oak finish shown



DC069 Style C

Five Drawer Bureau

39" (99cm)
Inlaid flap, Medium Oak finish shown

BUREAU BOOKCASE

- Glazed Bookcases can be fitted above any of our Writing Bureaux
- Choice of glazed door options

DC067 Style C /DC072

Four Drawer Bureau with 13 Pane Glazed Bookcase

30" (76cm) Antique Mahogany finish shown

LEATHER STUDY/OFFICE CHAIRS

- Our comprehensive range of traditional leather chairs are hand upholstered in the UK (not imported) by our own upholsterers.
- All chairs are covered in antique style hide leather. Colours available include: Olive Green, Bottle Green, Wine, Tan, Red, Blue, Brown and Black (see Wood & Leather Finishes). Other leather colours and material options also available.
- Chair seats can be upholstered in three different ways:
Plain Seat, Plain Back (PS/PB)
Plain Seat, Buttoned Back (PS/BB)
or Buttoned Seat, Buttoned Back (BS/BB)
- Hardwood chair frames are polished in our workshops to any wood shade
- Choice of Twin Wheel Brass Hooded Casters or Wooden Turned Feet.
- All swivel chairs come with gas adjustable height and tilt mechanism.



UPHOLSTERY OPTIONS



*Plain Seat
Plain Back*



*Plain Seat
Buttoned Back*



*Buttoned Seat
Buttoned Back*



DC047

*Regency Single Chair
Polished Top Rail*



DC048

Regency Single Chair



DC051

Typist Single Swivel



DC055

Viscount Single Swivel

LEATHER STUDY/OFFICE CHAIRS



DC055

Viscount Carver Swivel



DC055

*Viscount Carver Swivel
(plain upholstery)*



DC053

Court Swivel



DC054

Captain's Swivel



DC049

Belmont Swivel



DC058

Richmond Swivel



DC057

Gainsborough Swivel



NEW

Williams Swivel



DC059

Ascot Swivel



DC061

Directors Swivel

**CHAIRS
ON
LEGS**



DC056

Gainsborough Chair



DC055

*Viscount Carver Chair
(Plain Upholstery)*



DC050

Regal Tub Chair

LEATHER STUDY/OFFICE CHAIRS



DC060

Library Chair



DC062

Georgian Wing Chair



DC064

Chesterfield Chair



DC065a

2 Seater Chesterfield



DC065b

3 Seater Chesterfield

BOOKCASES

SMALL BOOKCASES

- Bookcase tops and drawer fronts can be inlaid or left plain
- Cupboard doors (where fitted) can also be inlaid or left plain with raised decorative moulding applied
- Bracket feet or plinth base
- Loose adjustable shelves
- Six different wood finishes to choose from



DC088

*One Drawer
Open Bookcase
18" (46cm)*



DC089

*Two Drawer
Open Bookcase
30" (76cm)*



DC091

*Regency One Drawer
Cupboard Bookcase
Yewwood Finish 30" (76cm)
(3 sizes available, with or without doors)*



DC092

*Regency Two Drawer Open
Bookcase
Mahogany Finish 42" (107cm)*



*Bookcase shelves can be
adjusted using brass pegs*



DC095

*Regency Three Drawer Cupboard Bookcase
60" (152cm) Burr Elm Finish Shown*

LOW OPEN BOOKCASES

- Two adjustable shelves per compartment
- Bracket feet or plinth base
- Made up to a width of 72" (183cm)
- Standard overall depth of 13" (33cm) giving shelf depth of 10½" (27cm)

*Bookcases wider than
42" (107cm) require a
central column to stop
shelves bowing*



DC078(c)

*Two Shelf Open Bookcase
36" (91cm) x 36" (91cm)
Yewwood Finish (4 widths available)*



DC079(a)

*Four Shelf Open Bookcase
48" (122cm) x 36" (91cm)
Light Oak Finish Shown*

BOOKCASES

LOW CUPBOARD BOOKCASES

- These cupboards have been designed to take box & lever arch files
- Fitted with locking doors and 2 adjustable shelves inside
- Made up to a width of 72" (183cm)
- Standard overall depth of 15" (38cm) giving shelf depth of 13" (33cm)



DC079a

Low Cupboard Bookcase

48" (122cm) x 36" (91cm) Medium Oak finish shown

TALL OPEN BOOKCASES

- A tall bookcase is an efficient way of housing plenty of books or box files. Made up to a width of 42" (107cm) and height of 96" (244cm). Overall depth including the overhanging cornice is 13" (33cm) giving a shelf depth of 10.5" (27cm)
- All shelves are fully adjustable
- Flush cupboard doors can also be fitted as shown. These can be inlaid or left plain with raised moulding



DC081(b)

Tall Five Shelf Open Bookcase

6' (183cm) x 3' (91cm)
Mahogany Finish

DC082(b)

Tall Open Bookcase with Two Flush Cupboard Doors

6'6" (198cm) x 3' (91cm)
Medium Oak Finish



DC086b

Tall Open Bookcase

60" (152cm) x 78" (198cm) Light Oak finish shown

Bookcases wider than 42" (107cm) require a central column divide to stop the shelves from bowing. The very wide 5' and 6' bookcases will need to be made in two vertical halves to get them into the building. These then butt and screw together.

BOOKCASES

TALL DEEP BASE CUPBOARD OPEN BOOKCASES

- All our tall bookcases can be made with a deep base cupboard which provides for greater storage depth. The top open section is the standard 13" (33cm) depth, while the base unit is 16" (41cm) deep. Height of the base from the floor is 31" (79cm). This can be manufactured lower or higher if wanted.
- Base doors are fitted as standard and can be inlaid or left plain with raised moulding.



DC081(a)

Tall Open Bookcase with Deep Cupboard Base

72" (183cm) x 30" (76cm) Burr Oak Finish



DC086(c)

Tall, Wide Bookcase with Deep Cupboard Base

72" (183cm) x 78" (198cm) Burr Elm Finish



Cut outs for skirting boards can be made, allowing Bookcases to sit flush against the wall.

OPTIONAL TOP DOORS

Glazed or solid top doors can be fitted



DC087c

Tall Flush Cupboard Bookcase

6' (183cm) x 7' (213cm)
(Optional Glazed Doors fitted) Burr Oak Finish

CORNER BOOKCASES

All bookcases can be made to turn a corner



DC083b

Corner Bookcase

36" (91cm) x 84" (213cm)
Antique Mahogany Finish

DC087c

Corner Bookcase

72" (183cm) x 84" (213cm)
Antique Mahogany Finish

BOARDROOM/DINING TABLES & CHAIRS

REGENCY RANGE

- Tables available include Circular, Pembroke, Twin Pedestal, and Foldaway Centre Leaf tables
- Choice of round end or 'D' end
- Complimentary range of Regency style chairs



DC106

*Table with fold away centre leaf
6'6" (198cm) x 3' (91cm) Yewwood Finish shown*



DC114

*Polished Top
Rail Chair
Mahogany Finish shown*



DC115

*Cross-Stick
Chair
Mahogany Finish shown*



DC123

*Hepplewhite
Balloon Back
Chair
Yewwood Finish shown*



DC121

*Wheatear Shield
Back Chair
Mahogany Finish shown*



DC120

*Prince of Wales
Shield Back
Chair
Yewwood Finish shown*



*Sapani Straight
Leg Chair
Mahogany Finish shown*

VICTORIAN RANGE

- Victorian style tables are made in solid mahogany with 5" thick legs on solid brass castors
- Choice of round end or 'D' end
- Range of set sizes plus made to measure
- Complimentary range of Victorian style chairs to match



DC111

*D' End Victorian Style Table
7' (214cm) x 3'6" (107cm)*



DC126

*Fiddle Back
Mahogany Single Chair*



DC129

*Admiralty Upholstered
Carver Chair*



DC129

*Admiralty Upholstered
Single Chair*

SIDEBOARDS & GLAZED BOOKCASES

SIDEBOARDS



DC131

Two Door Inlaid Sideboard

3'3"(99cm) Yewwood Finish shown



DC137

Four Door Inlaid Sideboard

6'(183cm) Mahogany Finish shown

GLAZED BOOKCASES



DC143

*Three Door Gothic with Arch Style
Glazed Bookcase - Raised Moulding*

4'10"(147cm) Yewwood Finish

- Sideboards and Glazed Bookcases available in eight different sizes
- Choice of inlaid drawers and doors or plain drawers with raised moulding on doors
- Wooden barred doors or cut glass doors in a range of styles
- Mirror backs and lights can be fitted
- Wooden or glass shelves



DC145

*Four Door Gothic with Arch Style
Glazed Bookcase incorporating
Drinks Cabinet, Raised Moulding*

5'4"(162cm) Mahogany Finish shown
Optional Pediment Fitted



DC139

*Two Door Glazed Bookcase 13 Pane Style
Doors, Raised Moulding*

3'(91cm) Burr Elm Finish shown

OCCASIONAL FURNITURE

CORNER CABINETS



*Corner Cabinets
available as top or
base unit.
Yewwood finish shown*



DC161
*Flat Fronted
Gothic Style
Corner Cabinet
Mahogany finish shown*

DISPLAY CABINETS

- Large range available
- Wooden barred doors or cut glass styles
- Mirror backs, lights
- Made to measure service



DC150

*Flat Front Two Door
Display Cabinet*

39"(99cm) Gothic Style cut glass doors shown

VIDEO/DVD/TELEVISION CABINETS

DC193

*Corner Video Base
Cabinet with Glass Door*

33"(84cm) wide Yewwood finish shown

*Fully
enclosed
Television
Cabinets
with Split
Folding
Doors made
to order*



COFFEE & LAMP TABLES



DC180

Oval Coffee Table

*46"(117cm) x 30"(76cm)
3 sizes available*



DC176

Chippendale Style Coffee Table

*42"(107cm) x 18"(46cm)
Shelf fitted*

Plus made to measure option



DC175

*Square Chippendale
Style Table*

*20"(51cm) x 20"(51cm)
Shelf fitted*

LIBRARY STEPS



Solid Mahogany Library Steps

*Leather treads, converts into a Coffee Table
17"-28" High x 16" Wide x 26" Deep*



*Solid Mahogany Spiral
Library Steps*

*Height to top tread 30",
Overall Height 62" x 29" Wide x 18" Deep
Four wooden treads inlaid with Burr veneer*

NEST OF TABLES



*Chippendale Style
Nest of Tables*

Mahogany finish shown

DESK LAMPS



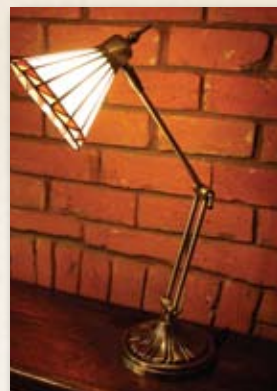
DC247

*Value Range, Green Shaded Brass Bankers Lamp
Polished or Antique finish*



DC248

*Green Shaded, Engraved Cast Brass Bankers Lamp
Polished or Antique finish*



DC252

Tiffany Adjustable Desk/Table Lamp



DC251

Camillo Tiffany Shaded Bankers Lamp



DC250

Dragonfly Tiffany Shaded Bankers Lamp



DC253

Book End Desk Lamp with World Map Shade

ANTIQUE STYLE WORLD GLOBES

- Choice of 3 bases
- Size 42cm high, 32cm diameter



Walnut finish



Natural finish

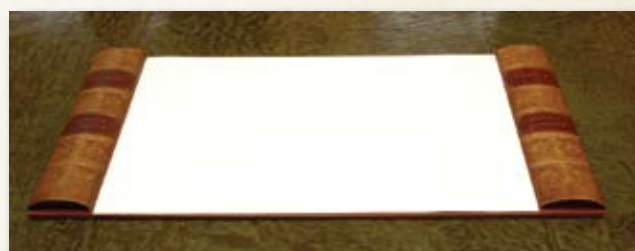


Antique Brass finish

DESK BLOTTERS



*Hand Made Leather Blotters
Two sizes available (All leather colours available)
Small 36cm x 49cm
Large 38cm x 71cm*



DC280

*Book End Blotter
71cm x 38cm x 0.7cm*

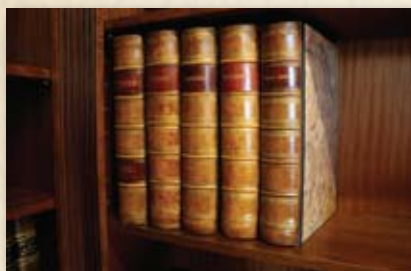


DC295

*Hand Made Leather Mouse Mat
23cm x 23cm*

DESK ACCESSORIES

- Stylish range of bookend designed accessories
- Hand made in England



DC260 *Receipt Ledger Box*
DC261 *Pension Ledger Box*
DC262 *Mortgage Ledger Box*
DC263 *Banking Ledger Box*
DC264 *Miscellaneous Ledger Box*
 37cm x 7.5cm x 26cm



DC265 *Receipt Lever Arch File*
DC266 *Ledger Lever Arch File*
 34cm x 8.8cm x 29cm



DC288
Umbrella Stand 48cm x 23cm



DC270 *Telephone Directory Holder*
DC271 *Monthly Journal Holder*
 32cm x 12cm x 27cm



DC274
Bookends 19cm x 13cm



Ledger Box
 Open View



DC281
Waste Bins (Round or Square)



DC303
Open Book Magazine Tidy



DC275
Filing Tray 29cm x 39cm x 6.5cm



DC286 *Square Pen Pot with Quartz Clock*
DC276 *Letter Rack*
DC279 *Round Pen Pot*
DC278 *Desk Organiser Tray*
DC277 *Book Pen Holder*



DC282
Magnifying Glass
 22cm Long



DC283
Letter Opener
 21.5cm Long



DC284
Coasters (Set of 4)
 9.5cm x 9.5cm

*View more desk accessories
 on our website
www.thedeskcentre.co.uk*



THE DESK CENTRE

74/76 Old Northam Road Southampton Hants SO14 0PB
 Tel (023) 8022 8939 Fax (023) 8023 1330 Website www.thedeskcentre.co.uk
 Email enquiries@thedeskcentre.co.uk

A.E. Worley & Son Ltd.